

# 160 +/- Acres - McLean County, ND **LAND AUCTION**

**Thursday, April 11, 2019 - 11:00 a.m. (CT)**

**AUCTION LOCATION: Legion Hall - Turtle Lake, ND**

This is exceptional cropland currently in the Conservation Reserve Program (CRP) until 9-30-2027. This land is in Andrews Township and has a strong Soil Productivity Index (SPI) of 65.3.

## Property Information:

Acres: 160 +/-

Legal: SE ¼ 34-150-81

CRP Acres: 130.8 +/-

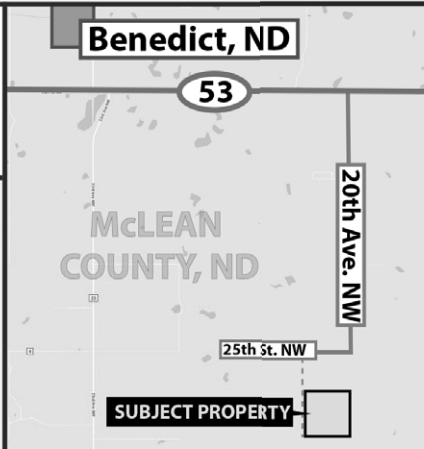
\$53.66/acre = \$7,019/year\*  
through 9-30-2027



**Kevin Pifer**

701.238.5810

kpifer@pifers.com



**OWNERS: Kelli Williams & Lauri Anderson**

This sale is managed by Pifer's Auction Company, Kevin D. Pifer, ND #715. All statements made the day of the auction take precedence over all printed materials. The seller reserves the right to accept or reject any and all bids.

**Pifer's**  
LAND AUCTIONS

[www.pifers.com](http://www.pifers.com)

877.700.4099